

Fire!!

We have been burnt in the past; let's not have it happen again.

TOTAL FIRE BAN - No open fires without a permit.

[this includes Smokehouse Bay!]

Flares are for emergencies only, they are a fire risk.

Summer brings tinder dry conditions and the Barrier relies on a volunteer fire brigade. Help is far away.

Woof Woof

Please clean up after your dog.

Dogs are required to be on a lead in any public place or on beaches. Note: Some beaches are 'dogs prohibited' because of the presence of native shorebirds. Dogs are not permitted on Department of Conservation tracks or campgrounds.

Treasure Islands

Help protect our precious island wildlife.

Check for onboard stowaways before you leave the mainland and again between the islands you visit. If you've been ashore, are your shoes clean? Is all gear (bags) and cargo free from stowaways?



Mice and rats



Rainbow skinks



Argentine ants



Soil and seeds

Kauri Dieback

Phytophthora taxon Agathis (PTA) or Kauri dieback, is present on the island. ACT NOW to help stop it. To restrict its spreading, ensure footwear is clean before and after moving between forested areas (from mainland to island and within the island). Use the footwear cleaning stations at the entrance to DOC tracks to disinfect the soles of your shoes (salt water also works). Stick to the tracks and avoid kauri roots.

Great Barrier Marine Radio

Channel 01

Hours 0700 – 2000hrs; monitored **outside these hours for emergencies only**. 24 hours a day, 7 days a week. Trip reports and local assistance. Weather bulletins are at 0745 & 1745 daily.

Great Barrier Marine Radio runs off a private repeater and is made viable through the financial contribution of its members. Membership welcome (Port Fitzroy Info Centre has forms).



Coastguard assistance and trip reports Channel 82. Emergency calls Channel 16 or mobile phone *500.

Information about Great Barrier Coastguard - Ph 09 4290 740 and ask for Chris.



Medical (Aotea Health Ltd)

Clariss - Doctor (09) 4290 356

Port Fitzroy - District Nurse (09) 4290 047

If no answer to the above numbers, in an emergency dial 111

Pharmacy (Clariss) (09) 4290 006

This brochure has been produced to help care for this place. Please consider passing it onto others in order to reduce the need for printing more, and recycle when finished.

Design and text by Brigid Graney (Envirokiwi Ltd) with support from the Great Barrier Island community, Auckland Council and the Department of Conservation.

Image courtesy of Kotuku Sanctuary Charitable Trust collection. Printed on recycled paper.

Are you travelling by boat?

Welcome to Aotea 'The Barrier'

We want to help you get the most out of your visit. Here are some tips on how to do things the Barrier way.

Welcome!

Aotea, Great Barrier Island, is a special place. Through our actions we show respect. Please join with us in caring for this place that we call home.

Coastal Services

Port FitzRoy

- **Port FitzRoy Wharf** has water and fuel [it is recommended you boil the water before drinking]. The **rubbish and recycling drop off point** is to the right of the wharf. To the left are the **Port FitzRoy Dive Station** (fills & testing) and **The Hub** (burgers, chips etc).
- Just up the road is the **Information Centre** (incl. DOC information), the rural nurse based at the **Nurses' Cottage**, **Port FitzRoy Shop** (provisions, off licence, postal centre, gas bottle refills) and **The Boat Club** (meals). Internet access via Wizard Net is available from the Information Centre or Boat Club.
- In Karaka Bay is **Orama Oasis** (Laundry & small shop).

Whangaparapara Harbour

- **At the wharf** for water, fuel and the **rubbish & recycling drop off point**.
- **Great Barrier Lodge** (eating out, provisions, off licence, ice, bait, dive bottle refills & fuel). Check out **other local services** on the Lodge's noticeboard (e.g., local bike hire with Paradise Cycles; SUP hire/tours).

Tryphena Harbour

- **Shoal Bay Wharf** has no water or fuel. The **rubbish and recycling drop off point** is located in the carpark near the wharf. A rural nurse is located near Tryphena.
- **Mulberry Grove**, home to **Mulberry Grove Store and Cafe** and a **recycling-only drop off point**
- **Pa Beach** for the **Stonewall Village**, including **Wild Rose Cafe**, **Stonewall Store** and **The Outpost Gift Shop** (incl. postal centre) with the **Currach Irish Pub** next door.
- A short walk up Medlands Road - The **Barrier Social Club** (meals), **Aotea Gas & Gardens** and **GBI Gas Co Ltd** (gas bottle refills).
- On the road to **Puriri Bay** is **Tipi & Bob's** (meals). There is a **recycling-only drop off point** further west around the bay.

Hold onto Your Holding Tank

We value the clean clear waters for diving, swimming and growing good kai moana.

Know your limits for emptying your sewage.

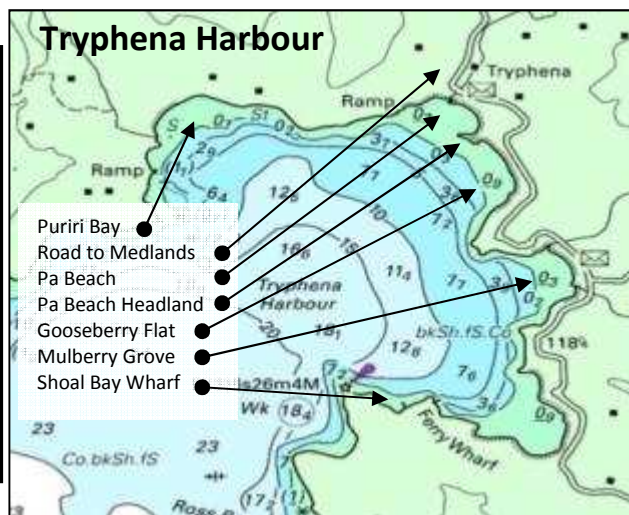
You are not permitted to discharge;

- closer than 500 metres from shore or
- closer than 500 metres from a marine farm or
- if the depth of water is less than 5 metres.



Port Fitzroy: It is inappropriate to empty holding tanks within this port. This is an enclosed harbour where marine farming, fishing and water sports occur. The harbour does not completely flush each tidal cycle.

No holding tank?
What are you doing?



Less to Landfill

Nature knows no waste. It's an ideal we are striving for. Reduce, Reuse & Recycle.

When you throw something 'away', it ends up contributing to a rubbish pile on the island.



On the other hand, all recyclables are shipped to the mainland to approved companies for ongoing use.

Help us reduce waste going to the island's landfill by following the rule;

- **If you boat it in, then boat it out** – you have far better landfill and recycling options on the mainland.
- If you do need to leave items on the island then **SEPARATE your recyclables from landfill waste.**

Drop off your rubbish and recycling:

Full Rubbish & Recycling

- Port Fitzroy Wharf
- Whangaparapara Wharf
- Tryphena Wharf (Shoal Bay)

Recycling only

- Puriri Bay
- Mulberry Grove

Recyclables go into the green wheelie bins – separate aluminium cans, steel cans, glass (separate by colour please) and plastics. ALL rubbish in the skips goes to the island's landfill.

Man O' War Passage Rubbish Barge

It's easy, **split your waste two ways** – landfill rubbish or mixed recyclables. Follow the signs.

Please use the waste facilities listed here. Small bins in public places are not for domestic/boating rubbish.



If your waste came from the sea, return it to the sea, in deep water.

Be part of the solution not the pollution.

Keeping our actions consistent with how we feel about this place.